

Logging Trailer



That's the way a logging trailer should be

- ... uncomplicated
- ... reliable
- ... low maintenance
- ... powerful



Photos: Fu. Oetler, photostudio.de (M. Dittes, thucalino, merfidi)

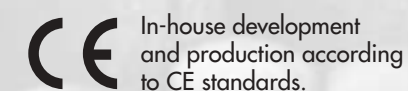
Technical Data: Logging Trailer

Model	RW 5	RW 4-07
Unladen weight	2,500 kg	approx. 1,500 kg
Max. laden weight	12,000 kg	8,000 kg
Frame	centre tube frame, mechanical extension by 1.20 m	centre tube frame
Length of loading area	3.85 m (short)/5.05 m (extended)	approx. 3.50 m
Overall length	6.05 m (short) - 7.25 m (extended)	approx. 5.80 m
Load capacity	approx. 13 m ³	approx. 7 m ³
Ground clearance	75 cm	60 cm
Width	2.38 m	approx. 1.95 m with 11.5/80 - 15.3 tyres approx. 2.20 m with 400/60 - 15.5 tyres
Drawbar	hydraulically adjustable to both sides by 40°	hydraulically adjustable to both sides by 35°
Axles	seesaw tandem axles; position of axles movable by approx. 2.70 m	rigid axles
Brake system	hydraulically actuated drum brake or compressed-air brake system	
Size of tyres	500/50 -17	11.5/80 -15.3, optional 400/60 -15.5
Front railing	standard	standard
Lighting system	standard	standard
Mechanic frame extension (rear) by means of two stakes	standard	optional

Technical Data: Logging Crane

Model	FK 6,5	FK 4
Standard reach of crane optionally with double telescopic boom	6.50 m 8.00 m	5.10 m 6.30 m
Slewing range	360°	360°
Swivel gear	4-cylinder rack-and-pinion swivel gear	live ring, heavy-duty swivel gear
Swivelling moment	Gross, 12.8 kNm	
Work pressure	180 bar	150 bar
Lifting capacity at max. extension	450 kg	standard 660 kg, with telescopic boom 480 kg
Unladen Weight	980 kg	standard 780 kg, with telescopic boom 850 kg
Timber clam opening	1,200 mm	1,000 mm
Torque rotator	1,000 Nm	700 Nm
Control valve	sandwich design, incl. 2-lever-control (2 functions electrically controlled)	

Specifications and design subject to change without further notice.



Richard Ostler Maschinenbau GmbH · Schlingener Str. 2a · D-87668 Rieden b.Kaufbeuren
 Telephone: +49 (0) 83 46/98 20 26 · Telefax: +49 (0) 83 46/98 20 27
 E-mail: info@ostler-maschinen.de · www.ostler-maschinen.de



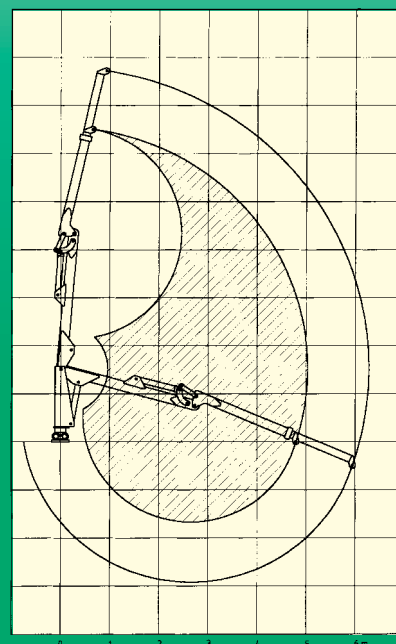
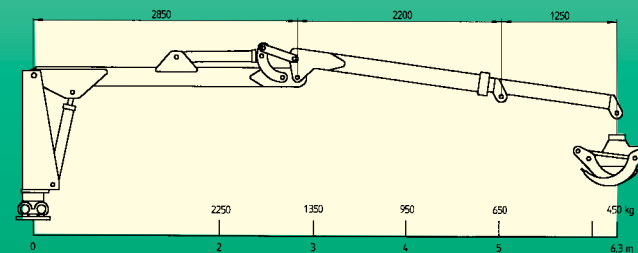
RW 5



RW 4



Branch cutter (special equipment)
Working width 2.20 m;
including adjustable cylinder



Ostler logging trailers are convincing because of their extremely robust design. Ostler stands for utmost quality and flexibility. As our company designs and builds all its products at our headquarters in Rieden, we are able to comply with your individual requests. Due to rising prices for raw materials wood is more in demand – invest in your future!

The perfect trailer for all kinds of applications: logging trailer **RW 5** has a maximum laden weight of 12,000 kg with an unladen weight of 2,500 kg. The length of its loading area can be mechanically extended by 1.20 m from 3.85 m to 5.05 m. With an unladen weight of approx. 1,500 kg the smaller logging trailer **RW4** has a maximum laden weight of 8,000 kg. The trailer's loading area has a length of approx. 3.50 m. All models are equipped with hydraulic brake systems and have the option of compressed-air brake systems, internal oil supply systems or travelling mecha-

nisms powered by wheel hub motors. The **logging crane for RW5** has a standard reach of 6.50 m and is equipped with four swivelling cylinders. The lifting capacity (tool included) at 6.50 m is 450 kg. The smaller Model (for RW4) reaches 5.10 m and is equipped with a heavy-duty swivel gearbox. Timber clam and rotation servo control are standard equipment. The slewing range is 360°. Optionally the crane can be extended by means of a double telescopic boom. Further optional equipment: radio control and electro-magnetic control.