

# Telescopic Loader T 100



**Multimobile -  
extreme  
mobility!**

- Main arm slewable to the back
- For work carried out with confined space
- Technical advantage due to row-link system

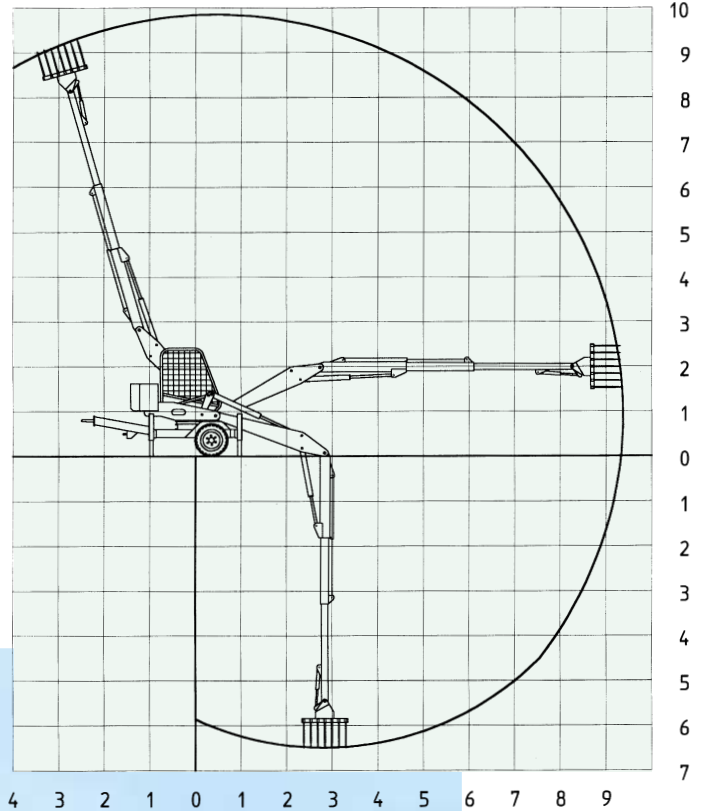
## Technical Data:

T 100

Maximum range of hay clam	9200 mm
Maximum range of load hook	8200 mm
Maximum operational depth of hay clam	6500 mm
Height in transport position	2950 mm
Lifting capacity without appliance	300-2400 kg
Diameter of turntable	880 mm
Speed of power take-off shaft	540 revs/min
Slewing range	endless
Wheel gauge	1800 mm
Overall width	2100 mm
Tyres	10.0 / 75 -15.3
Support alternatively	hydraulic/mechanical
Dead weight incl. concrete ballast	3200 kg

Dimensions are not binding. Changes in design may be subject to alterations.

# Telescopic Loader



In-house  
development  
and production  
according to  
CE standards

# T100

## Standard Equipment:

- Hay clam 1600, 2 x 7 tines
- Electromotor 5.5 kw
- 2-lever (EURO) control
- Load support valves
- Safety driver's cabine
- Fourfold mechanical support
- High position of clam
- Concrete ballast

## Special Equipment:

- Hay clam 2000, 2 x 6 tines
- Hydraulic drive
- Earth scoop
- Hydraulic support
- Hour meter

Richard Ostler Maschinenbau GmbH · Schlingener Str. 2a · D-87668 Rieden b.Kaufbeuren

Phone: +49 (0) 83 46/98 20 26 · Telefax: +49 (0) 83 46/98 20 27

e-mail: [info@ostler-maschinen.de](mailto:info@ostler-maschinen.de) · [www.ostler-maschinen.de](http://www.ostler-maschinen.de)