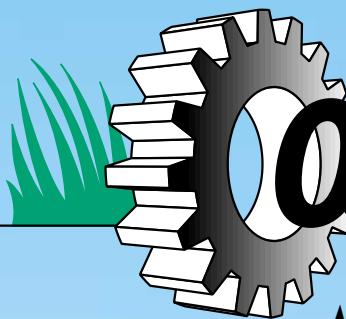


Universal Loader FL 700



**OSTLER**

Richard Ostler  
Maschinenbau GmbH



***The  
powerpack!***

• Standard heavy duty slew transmission

• High lifting capacity due to tandem main arm cylinder

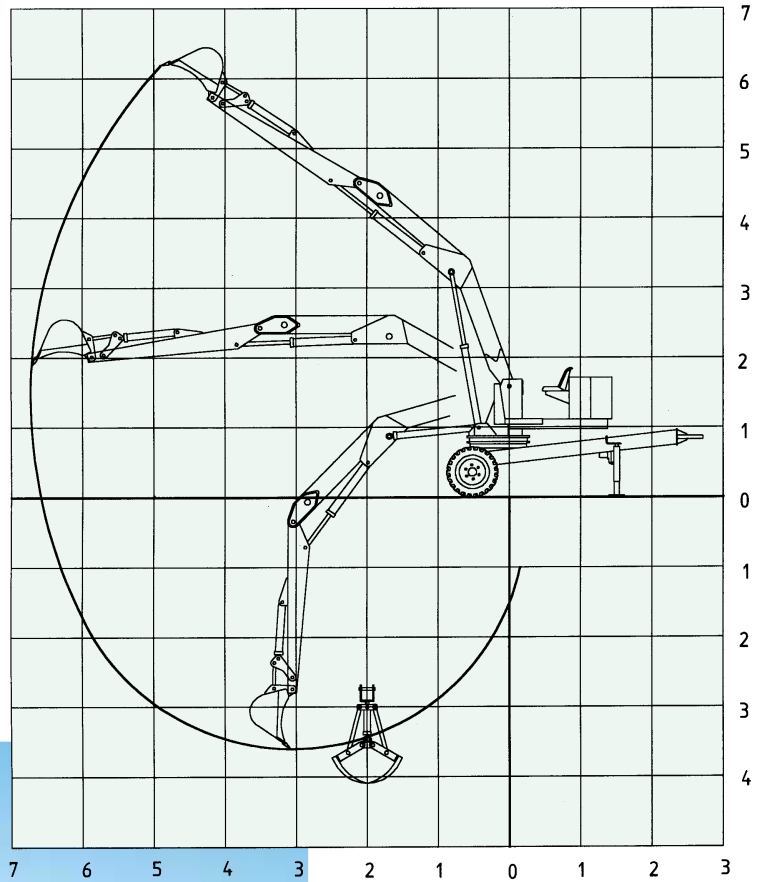
## Technical Data:

## FL 700

Maximum range of dipper shovel . . . . .	6,850 mm
Maximum range of load hook . . . . .	6,000 mm
Maximum operational depth of dipper shovel . . . . .	3,600 mm
Maximum operational depth of earth scoop . . . . .	4,000 mm
Maximum operational height of load hook . . . . .	5,800 mm
Lifting capacity without appliance . . . . .	1,700-3,800 kg
Diameter of turntable . . . . .	880 mm
Speed of power take-off shaft . . . . .	540 U/min.
Slewing range . . . . .	endless
Torque . . . . .	1,800 Nm
Wheel gauge . . . . .	1,800 mm
Overall width . . . . .	2,030 mm
Tyres . . . . .	11.5 / 15 impl.-10 ply
Support alternatively . . . . .	hydraulic/mechanical
Dead weight incl. concrete ballast (without appliance) . . . . .	2,900 kg

Dimensions are not binding. Changes in design may be subject to alterations.

# Universal Loader



In-house  
development  
and production  
according to  
CE standards



# FL 700

### Standard Equipment:

- Control valve with sandwich design
- Seat and control system laterally arranged
- Covering of tube acc. to CE standards
- Tyres 11.5/15 impl. 10 ply
- Concrete ballast

### Special Equipment:

- Dung clam, 2 x 6 tines
- Dipper shovel 30- 60 cm, cone shaped
- Dipper shovel 30- 60 cm, constrained  
automatically controlled discharger
- Earth scoop
- Rotation servo for earth scoop

- Ditch shovel 75/100/125 cm
- Separate mechanical support
- Separate hydraulic support
- Electromotor 5.5 or 7.5 kw
- 2-lever (EURO) control
- Hour meter

Richard Ostler Maschinenbau GmbH · Schlingener Str. 2a · D-87668 Rieden b.Kaufbeuren  
Phone: +49 (0) 83 46/98 20 26 · Telefax: +49 (0) 83 46/98 20 27  
e-mail: info@ostler-maschinen.de · www.ostler-maschinen.de